

# Accessories



LOGIC · EASY · BETTER



# System-Free Accessories for Scaffolding

## Certified Safety

To keep you flexible in any scaffolding challenge that might appear in terms of technical and economical reasons, ALTRAD plettac ascco offers practice-oriented and considerable system-free accessories. No matter whether you have to deal with safety-, working- or birdcage scaffolds with special requirements or tremendous great load bearing capacities are required and reinforcements are necessary, our accessory program always is an ideal solution. Scaffolding components have to be checked before use in terms of proper condition.

## Directory

1. Accessories for Frames and Decks system free	Page	4, 5
2. Base Plates	Page	5, 6
3. Fall Arrest/Pedestrian Protection	Page	6
4. Lattice Girders, Bridges	Page	6-14
5. Staircases	Page	15
6. Couplers	Page	15-23
7. Ties	Page	24, 25
8. Lift, Winches	Page	25-27
9. Additional Accessories	Page	27-35
10. Safety at Work	Page	35-37

### Abbreviation:

H	= Height
L	= Length
W	= Width
LH	= Lift Height
BL	= Bay Length
SW	= System Width
PQ	= Package Quantity
LC	= Load Class

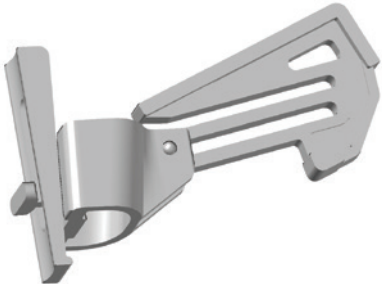
## Frames

### Steel Vertical Frame quadro

The U-profile on the top of the frame is supporting the decks. Guard rails or double guard rails are fixed by wedges. The vertical frames are available in different widths and heights. The steel tubes are Ø 48,3 mm.

#### Quick Lock Wedge Pocket

for steel vertical frames quadro W73 light



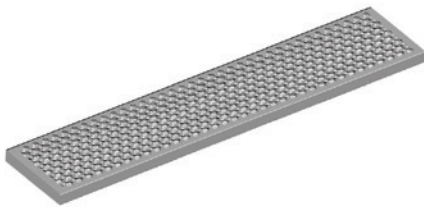
Code	Dimensions [cm]	Weight [kg]
5F00202031		0,6

## Decks system free

### Steel Deck system-free

Robust steel plank for preparation purposes of bridgings, suitable for all scaffolding systems. Applicable in places with increased fire protection terms.

#### Steel Deck system-free



Code	Dimensions [cm]	Weight [kg]	LC
5FSOG75503	4,5 H x 30 B x 100 L	6,4	6
5FSOG75502	4,5 H x 30 B x 150 L	9,5	6
5FSOG75501	4,5 H x 30 B x 200 L	12,5	5
5FSOG75500	4,5 H x 30 B x 250 L	15,5	3

### Timber Deck system-free

Frame Floorboards, glued, S 10/MS according to DIN 4074 part 1, rectangular capped, sharp-edged, cut, unshod; ÜH DIN 4420 (scaffold plank non-glued on request).

#### Timber Deck system-free



Code	Dimensions [cm]	Weight [kg]
5FHOL70001	4,5 H x 24 B x 400 L	23,8
5FHOL70002*	4,5 H x 24 B x 350 L	20,8
5FHOL70003	4,5 H x 24 B x 300 L	17,8
5FHOL70004	4,5 H x 24 B x 250 L	14,9
5FHOL70005	4,5 H x 24 B x 200 L	11,9
5FHOL70006	4,5 H x 24 B x 150 L	8,9
5FHOL70007	4,5 H x 24 B x 100 L	5,9

### Scaffold plank fitting

strip steel, galvanized, 500 x 30 1.0 mm with 6 shared nail-holes, with folded edges



Code	Dimensions [cm]	Weight [kg]
5FDIV00118		0,1

## Base Plates

### Base Plate

A number of base plates in various lengths are available to compensate uneven scaffold foundations. The base plates thread is rounded to allow the wing nut to be quickly screwed up or down, whilst also making cleaning easier. It is important to note that 25 % of the base plates length or at least 15 cm should always be in the scaffold standard.

### Base Plate

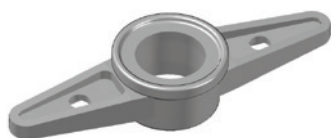
tubular spindle with round thread fitted with wing nut and 15x15 cm base plate



Code	Dimensions [cm]	Weight [kg]	PQ
5FSOG59006	40 H	2,9	250
5FSOG59007	60 H	3,6	200
5FSOG59008	80 H	4,3	200
5FSOG60000	78 H	6,0	200

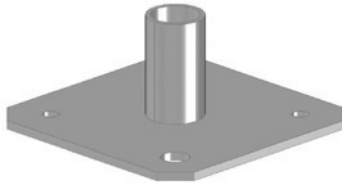
tilting

### Wing Nut



Code	Dimensions [cm]	Weight [kg]
5FFLM34000*		0,7
Ø 34		
5FFLM40000		0,6
Ø 38		
3ZFLLM20000		0,4
Ø 38, acme thread		

## Base Plate w/o Vertical Adjustment



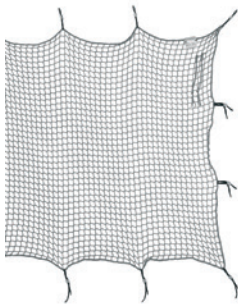
Code	Dimensions [cm]	Weight [kg]
<b>5FSOG48000</b>	15 B x 15 L	1,1

## Fall Arrest / Pedestrian Protection

### Fall Arrest

For assembling fall arrest scaffolds the supports are to be fixed on top level and connected with the fall arrest mesh panels. Safety nets used with guard rails instead of mesh panels are alternatively available. In that case the nets have to be secured by using snap buckles to the upper and lower guard rails. The recommended distance between the snap buckles is 75 cm.

### Safety Net



Code	Dimensions [cm]	Weight [kg]
<b>5FPLA01900</b> mesh size 45, w/o snap buckle	1.000 B x 200 L	8,9
<b>5FPLA01912</b> mesh size 45, w. snap buckle	1.000 B x 200 L	9,8
<b>5FPLA01902</b> mesh size 100, w/o snap buckle	1.000 B x 200 L	4,7
<b>5FPLA01916</b> mesh size 100, w. snap buckle	1.000 B x 200 L	5,5
<b>5FPLA02121</b> snap buckle supplied separately		

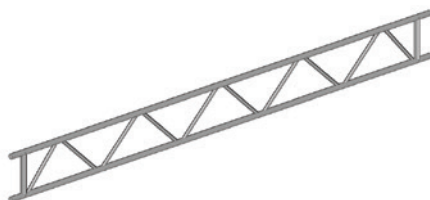
## Lattice Girders, Bridges

### Steel Lattice Girder

Lattice girders in lengths up to 820 cm for bridging spans, cantilevering out, designing platforms and other special applications. Connection to scaffold by means of double couplers only. Reinforcing braces are fixed in distances of 50 cm. Height = 45 cm.

### Steel Lattice Girder H40

axle distance 40 cm, height 45 cm, steel tube Ø 48,3 mm, loading tables on demand, girders may be extended using connection spigots



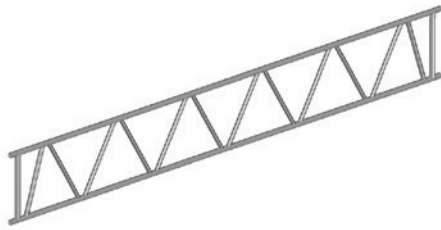
Code	Dimensions [cm]	Weight [kg]	PQ
<b>5FSOG84500</b>	40 H x 320 L	30,3	10
<b>5FSOG84501</b>	40 H x 420 L	39,2	10
<b>5FSOG84502</b>	40 H x 520 L	48,2	10
<b>5FSOG84503</b>	40 H x 620 L	57,1	10
<b>5FSOG84504</b>	40 H x 770 L	71,2	10
<b>5FSOG84505</b>	40 H x 820 L	75,7	10

## Heavy Load Lattice Girder

Lattice girders in lengths of up to 700 cm. Similar design to the normal lattice girder but with a bigger height to enable the beam to carry more load. The heavy load lattice girders form the main support for the plettac modular roof. Height = 75 cm.

### Heavy Duty Lattice Girder H70

axle distance 70 cm, height 75 cm, steel tube Ø 48,3 mm, loading tables on demand, girders may be extended using connection spigots



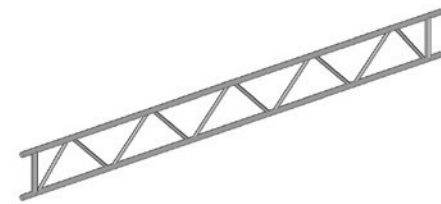
Code	Dimensions [cm]	Weight [kg]	PQ
5FMD06500	70 H x 300 L	33,4	10
5FSOG35003	70 H x 400 L	43,1	10
5FSOG35002	70 H x 500 L	52,9	10
5FSOG35001	70 H x 600 L	62,6	10
5FSOG35000	70 H x 700 L	73,2	10

## Alu Lattice Girder

Same as steel lattice girder but aluminium. Height = 45 cm.

### Alu Lattice Girder H40

axle distance 40 cm, height 45 cm, aluminium tube Ø 48,3 mm, loading tables on demand, girders may be extended using connection spigots



Code	Dimensions [cm]	Weight [kg]	PQ
5FSOG85000	40 H x 320 L	12,6	10
5FSOG85001	40 H x 420 L	16,3	10
5FSOG85002	40 H x 520 L	19,9	10
5FSOG85003	40 H x 620 L	23,6	10
5FSOG85004	40 H x 770 L	29,4	10
5FSOG85005	40 H x 820 L	31,2	10

## Apex Elements such as Stiffening Material

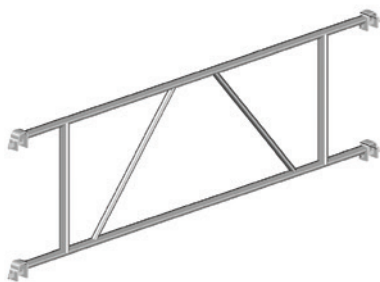
Parts for economical erection of interim halls.

### Apex for Heavy Duty Support



Code	Dimensions [cm]	Weight [kg]
5FMD06001*	40 H	8,5
5FMD06000	70 H	9,0

## Traverse Frame



Code	Dimensions [cm]	Weight [kg]
<b>5FMOD04001</b>	40 H x 250 L	16,9
<b>5FMOD04000</b>	70 H x 250 L	19,6

## Roof Diagonal



Code	Dimensions [cm]	Weight [kg]
<b>5FMOD04500</b>	190 B x 200 L	6,8

## Wall Adapter

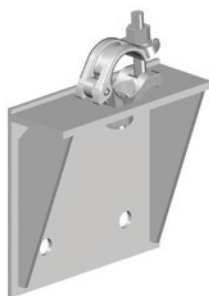
For construction of a load bearing construction. Loading capacities, please refer to the technical information, which we send you on request.

## Lattice Girder Adapter with 2 Pipe Sockets



Code	Dimensions [cm]	Weight [kg]
<b>5FSOG05000</b>	56 L	5,0
<b>5FSOG05001</b> for Heavy Duty Lattice Girder	86 L	6,5

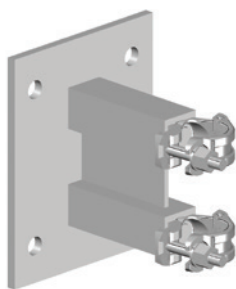
## Wall Support for Lattice Girders



Code	Dimensions [cm]	Weight [kg]
<b>5FSOG07500</b>		4,2



## Connection Plate

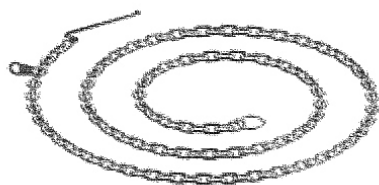


Code	Dimensions [cm]	Weight [kg]
<b>5FA9434401</b> w. 2 Half Coupler Ø 48,3, 22 A/F	20 B x 25 L	7,0

## Suspended Scaffold Chains

With ring 10 x 50, baffle plate and bolt lever, according to DIN 658, allowable tension load = 10 kN.

### Suspended Scaffold Chains



Code	Dimensions [cm]	Weight [kg]
<b>5FDIV10010*</b> Length 3 m	300 L	4,3
<b>5FDIV10011*</b> Length 4 m	400 L	5,6

## Triangular Support

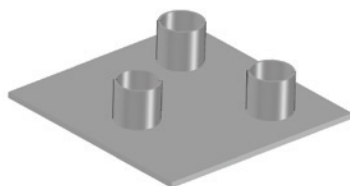
Stand with large load-bearing for interim halls and customized solutions. Extension with spigot for lattice girders possible.

### Triangular Support



Code	Dimensions [cm]	Weight [kg]
<b>5FSOG03000</b>	200 L	23,7
<b>5FSOG03001</b>	300 L	36,2
<b>5FSOG03002</b>	400 L	47,5
<b>5FSOG03003</b>	500 L	56,9
<b>5FSOG03004</b>	600 L	71,2

### Base Plate for Triangular Support



Code	Dimensions [cm]	Weight [kg]
<b>5FSOG03200</b>		6,8

## Raker Pile

For facade scaffoldings plettac SL 70/assco quadro 70. With a scaffold outrigger a scaffold can be secured against overbalancing without using a scaffold tie or clearance tie.

### Raker Pile

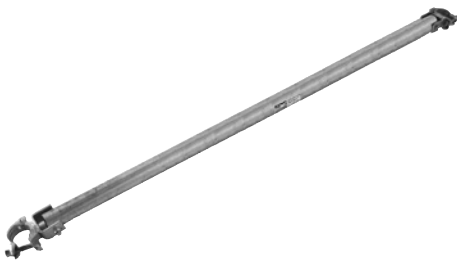
Infinitely adjustable, from 330-600 cm, 22 A/F



Code	Dimensions [cm]	Weight [kg]
5F00103673*		15,3

### Bracing for Raker Pile

1,50 m for Push-Pull-Prop, galvanized, 22 A/F



Code	Dimensions [cm]	Weight [kg]
5F00103674*		6,0

### Earth Nail

massive forged

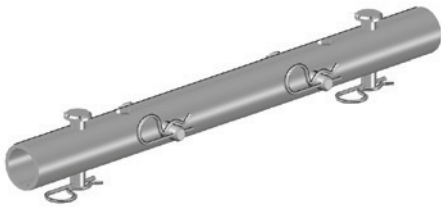


Code	Dimensions [cm]	Weight [kg]
5F00103675*	48 L	2,3
Ø 2,5		

## Connecting Spigot for Lattice Girder

These connection spigots are used to extend or connect lattice girders. Two spigots are required to form a butt joint. The spigots are inserted inside the tube ends and are secured using 4 bolts with spring clips. Alternative use of special bolt with self securing nut is possible. Curved connection spigots are available to form a ridge joint for roof constructions.

### Connecting Spigot Straight for Lattice Girder



Code	Dimensions [cm]	Weight [kg]
<b>5FSOG02101</b>		2,2
inclusive 4 connection bolts and spring clips per spigot		

### Bolt Ø 12 mm for Connection Spigot for Lattice Girder



Code	Dimensions [mm]	Weight [kg]
<b>3ZBOL01200</b>	60 L	0,1

### Circlip Ø 3,2 mm for Connection Spigot for Lattice Girder



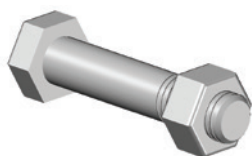
Code	Dimensions [cm]	Weight [kg]
<b>3ZFED10007</b>	10 L	

### Connecting Spigot Curved for Lattice Girder

inclusive 4 connection bolts and spring clips per spigot for lattice girder H40 to create a 10° pitch



Code	Dimensions [cm]	Weight [kg]
<b>5FSOG41000</b>		3,5
formed for the upper chord		
<b>5FSOG41001</b>		2,8
formed for the lower chord		

**Bolt M 12 x 70 w. Nut**

Code	Dimensions [cm]	Weight [kg]
<b>3ZSES01203</b>		0,1

**Connecting Spigot for U-Lattice Girder**

For the erection of vertical standards on top of transoms or beams with U-profile. Complete with 2 screws and nuts.

**Support Spigot for Lattice Girder**

Code	Dimensions [cm]	Weight [kg]
<b>5F00324002</b>		2,2

**Support Spigot**

Designed to enable foundation for standards. This spigot can be assembled on tubes Ø 48,3 mm. Choice of welded on half coupler or wedge connection.

**Support Spigot for Ledger w. coupler**

Code	Dimensions [cm]	Weight [kg]
<b>5FMPP10002*</b> 19 A/F	30 L	1,6
<b>5FMPP10000</b> 22 A/F	30 L	1,6

**Support Spigot for Ledger w. wedge joint**

Code	Dimensions [cm]	Weight [kg]
<b>5FMPP10001*</b>	36 L	2,1

## Spigot for ledger with U-piece



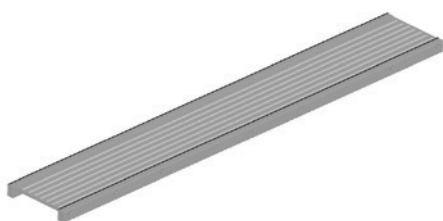
Code	Dimensions [cm]	Weight [kg]
<b>5F00202052</b>		1,7

## Alu Bridge

Aluminium bridges with a lengths of up to 10 m are designed for bridging spans and to build ceiling scaffolds. Post brackets are available for use with guard rail posts, system guard rails and toeboards to provide the necessary three part side protection. The requirements per railing connection are: 1 guard rail post, 1 post bracket, 1 tie rod, 2 wing nuts. The aluminium bridge must be secured against lifting. It is not permitted to continue scaffold off aluminium bridges.

### Alu Bridge

2,0 kN/m<sup>2</sup> capacity. Bridges longer than 616 cm: 1,5 kN/m<sup>2</sup> capacity



Code	Dimensions [cm]	Weight [kg]	PQ
<b>5FSOG74004</b>	60 B x 412 L	23,9	5
<b>5FSOG74003</b>	60 B x 512 L	27,5	5
<b>5FSOG74002</b>	60 B x 612 L	39,1	5
<b>5FSOG74001</b>	60 B x 812 L	66,1	5
<b>5FSOG74000</b>	60 B x 1.012 L	82,2	5

## Post Bracket



Code	Dimensions [cm]	Weight [kg]
<b>5FSOG46000</b>		1,2

## Tie Rod



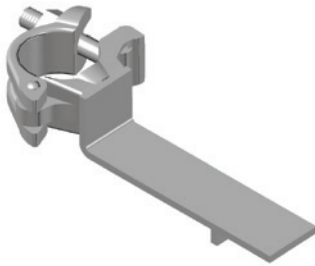
Code	Dimensions [cm]	Weight [kg]
<b>7FAST08000</b> 80 for 1 aluminium bridge	80 L	1,2
<b>7FAST14000</b> 140 for 2 aluminium bridges	140 L	2,0
<b>7FAST20000</b> 200 for 3 aluminium bridges	200 L	2,9

### Wing Nut



Code	Dimensions [cm]	Weight [kg]
5FFLM10001		0,4

### Deck Retainer



Code	Dimensions [cm]	Weight [kg]
5FKUP45502		1,0

### Special Post Bracket

allows a system independent arrangement of guard rails. Made up of:



Code	Dimensions [cm]	Weight [kg]
5F00491001	122 L	2,0
guard rail post		
5F00491002		0,4
post clip		
5F00491003		0,4
clip		

## Staircases

### Scaffold Ladder

Available in aluminium with main stringers from oval tubes for the connection of couplers or in steel version Ø 48,3 mm integrated tube connectors allow to connect ladders. For use if internal access or stair towers cannot be assembled.

#### Alu Scaffold Ladder

with connecting spigot, moulded and welded in steps, connection with standard couplers, axle measure 44 cm



Code	Dimensions [cm]	Weight [kg]	PQ
<b>5FSOG80004</b>	300 L	8,0	15
<b>5FSOG80001</b>	400 L	10,0	15
<b>5FSOG80002</b>	500 L	12,6	15
<b>5FSOG80003</b>	600 L	14,5	15

#### Steel Scaffold Ladder

with connection spigot, beam of scaffold tube Ø = 48,3 mm, optional prolongable, dimension between axle measure 40 cm



Code	Dimensions [cm]	Weight [kg]	PQ
<b>5FSOG81004</b>	200 L	17,5	15
<b>5FSOG81000</b>	300 L	26,8	15
<b>5FSOG81001</b>	400 L	33,7	15
<b>5FSOG81003*</b>	600 L	49,9	15

## Couplers

### Wedge Coupler

For the connection of scaffold items with Ø 48,3 mm.

#### Wedge Coupler, turnable



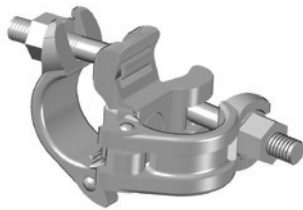
Code	Dimensions [cm]	Weight [kg]	PQ
<b>5FKUP83010</b> turnable		1,5	20 pieces/bag
<b>5FKUP40000*</b> fixed		0,7	20 pieces/bag

## Standard Couplers

Steel, drop-forged with T-bolt and shoulder nut.

### Normal Coupler

3rd party approved according to EN 74-1 safe working load: see item



Code	Dimensions [cm]	Weight [kg]	PQ
<b>5FKUP10011</b> Ø 48/48, 19 A/F		1,0	20 pieces/bag
<b>5FKUP10010</b> Ø 48/48, 22 A/F		1,0	20 pieces/bag

### Swivel Coupler

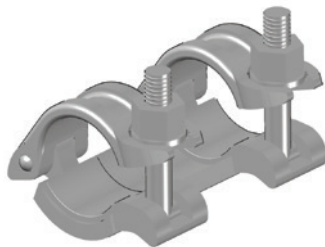
3rd party approved according to EN 74-1 safe working load: see item



Code	Dimensions [cm]	Weight [kg]	PQ
<b>5FKUP20017</b> Ø 48/48, 19 A/F		1,2	20 pieces/bag
<b>5FKUP20019</b> Ø 48/48, 22 A/F		1,2	20 pieces/bag

### Tension Coupler

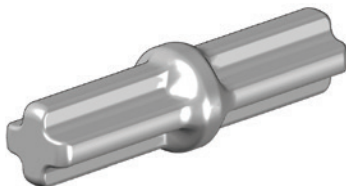
3rd party approved according to EN 74-1 safe working load: 3,6 kN to be combined with tube connection spigot forged



Code	Dimensions [cm]	Weight [kg]	PQ
<b>5FKUP65002</b> Ø 48, 19 A/F		1,3	15 pieces/bag
<b>5FKUP65001</b> Ø 48, 22 A/F		1,3	15 pieces/bag

### Tube Connecting Spigot forged

According to EN 74-3

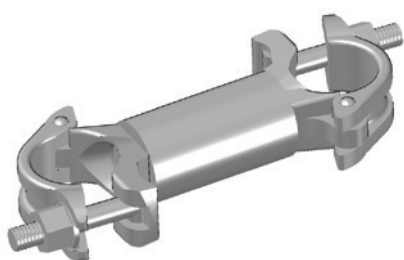


Code	Dimensions [cm]	Weight [kg]	PQ
<b>5FDIV10001</b>		1,3	25 pieces/bag



### Distance Coupler

for connection of parallel scaffold tubes



Code	Dimensions [cm]	Weight [kg]	PQ
<b>5FKUP17500</b> 22 A/F	16 W	1,5	15 pieces/bag
<b>5FKUP17501</b> 22 A/F	11 W	1,3	15 pieces/bag

### Distance Coupler L8, fixed

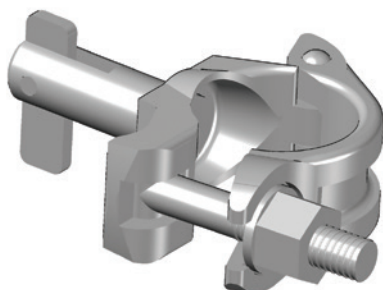
for the connection of parallel tubes with a minimised distance



Code	Dimensions [cm]	Weight [kg]
<b>5FKUP34500</b> 22 A/F	8 L	1,4

### Gravity Pin Coupler

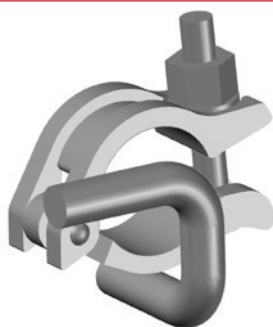
enables the assembly of additional SL guard rails



Code	Dimensions [cm]	Weight [kg]	PQ
<b>5FKUP50002</b> 19 A/F		0,7	25 pieces/bag
<b>5FKUP50001</b> 22 A/F		0,7	25 pieces/bag

### Scaffold Tie Coupler

are used in connection with a tube Ø 48,3 mm as scaffold tie



Code	Dimensions [cm]	Weight [kg]	PQ
<b>5FKUP38001</b> 19 A/F		1,0	20 pieces/bag
<b>5FKUP38000</b> 22 A/F		1,0	20 pieces/bag

### Toeboard Coupler

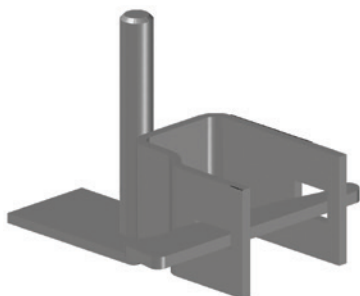
for connection of toeboards SL and quadro



Code	Dimensions [cm]	Weight [kg]
<b>5FKUP56001*</b> 19 A/F		1,2
<b>5FKUP56000</b> 22 A/F		1,2

### Toeboard Bracket

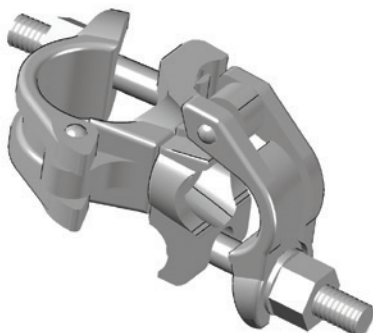
for support of SL-toeboards without concurrent deck securing



Code	Dimensions [cm]	Weight [kg]
<b>5FMPP22500</b>		1,1

### Normal Coupler, reducing

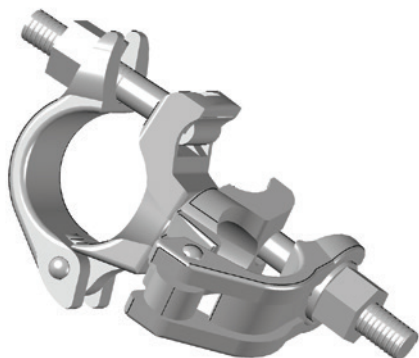
for the connetion of different tube dimensions w. a right angle



Code	Dimensions [cm]	Weight [kg]
<b>5FKUP10006</b> Ø 48/34, 22 AF		1,1
<b>5FKUP10012</b> Ø 48/42, 22 AF		1,3
<b>5FKUP10001</b> Ø 48/60, 19 A/F		1,6
<b>5FKUP10002</b> Ø 48/60, 22 A/F		1,6
<b>5FKUP10003</b> Ø 48/76, 22 A/F		1,9

### Swivel Coupler, reducing

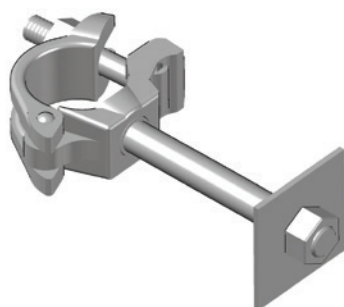
for the connection of tubes with different diameters w/o limiting the angle



Code	Dimensions [cm]	Weight [kg]
<b>5FKUP20011*</b>		1,0
Ø 38/34, 19 A/F		
<b>5FKUP20002</b>		1,1
Ø 42/42, 22 A/F		
<b>5FKUP20016*</b>		1,1
Ø 48/34, 19 A/F		
<b>5FKUP20015*</b>		1,1
Ø 48/34, 22 A/F		
<b>5FKUP20013</b>		1,1
Ø 48/38, 19 A/F		
<b>5FKUP20003</b>		1,1
Ø 48/38, 22 A/F		
<b>5FKUP20004</b>		1,1
Ø 48/42, 22 A/F		
<b>5FKUP20005</b>		1,5
Ø 48/60, 22 A/F		
<b>5FKUP20006</b>		1,5
Ø 48/60, 19 A/F		
<b>5FKUP20008</b>		1,9
Ø 48/76, 22 A/F		

### Screw On Coupler

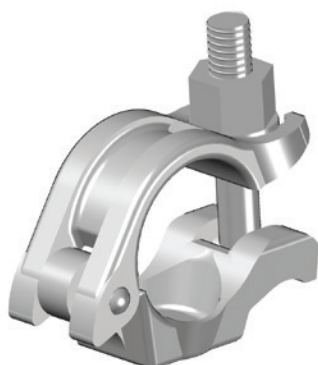
for the connection of different parts to scaffold tubes



Code	Dimensions [cm]	Weight [kg]
<b>5FKUP60003</b>		0,7
22 A/F w. bolt M20x32 mm, w/o plate		
<b>5FKUP60004</b>		0,7
19 A/F w. bolt M20x32 mm, w/o plate		
<b>5FKUP60002</b>		0,7
22 A/F w. bolt M14x50 mm, w/o plate		
<b>5FKUP60001</b>		0,9
22 A/F w. bolt M16x120 mm, w. plate		

### Half Coupler

with long T-bolt



Code	Dimensions [cm]	Weight [kg]
<b>5FKUP30001</b>		0,5
Ø 48,3, 22 A/F, galvanized, w. t-bolt, w. shoulder nut		
<b>5FKUP30002</b>		0,5
Ø 48,3, galvanized, w. t-bolt, w. wing nut		
<b>5FKUP30003</b>		0,4
Ø 48,3, Hole Ø 20,6, non-galvanized, w/o t-bolt, w/o shoulder nut		
<b>5FKUP30004</b>		0,4
Ø 48,3, Hole Ø 17,5, non-galvanized, w/o t-bolt, w/o shoulder nut		
<b>5FKUP30005</b>		0,4
Ø 48,3, Hole Ø 17,5, galvanized, w/o t-bolt, w/o shoulder nut		
<b>5FKUP30006</b>		0,4
Ø 48,3, Hole Ø 22,2, non-galvanized, w/o t-bolt, w/o shoulder nut		
<b>5FKUP30007</b>		1,0
Ø 60,3, 22 A/F, galvanized, w. t-bolt, w. shoulder nut		
<b>5FKUP30008</b>		0,5
Ø 33,7, 22 A/F, non-galvanized, w. t-bolt, w. shoulder nut		

### Beam Clamp

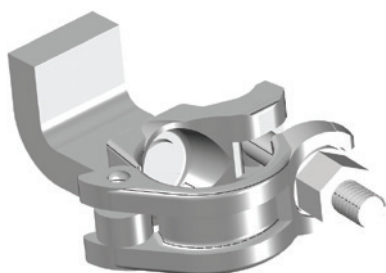
for the connection of Ø 48,3 mm tubes to T-beams and double T-beams. Beam clamps and claw couplers have to be assembled in pairs only. Permitted load capacity 9 kN/pair



Code	Dimensions [cm]	Weight [kg]
<b>5FKUP75001</b> 22 A/F		1,4

### Claw Coupler

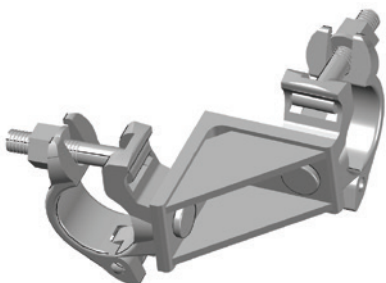
for the connection of Ø 48,3 mm tubes to T-beams and double T-beams. Beam clamps and claw couplers have to be built in only in pairs. Permitted load capacity 9 kN



Code	Dimensions [cm]	Weight [kg]
<b>5FKUP70001*</b> 19 A/F		1,0
<b>5FKUP70002*</b> 22 A/F		1,0

### Lattice Girder Coupler

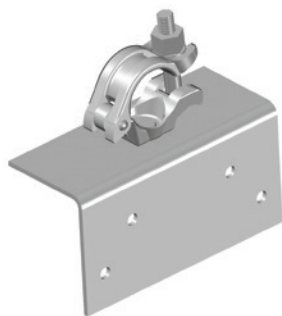
used to connect lattice girders to tubes at the lower chord



Code	Dimensions [cm]	Weight [kg]
<b>5FKUP86019*</b> 19 A/F		1,9
<b>5FKUP86022</b> 22 A/F		1,9

### Timber Coupler

for the connection of tubes to square-shaped timber



Code	Dimensions [cm]	Weight [kg]
<b>5FKUP80000*</b> 22 A/F		1,8

## Eyebolt Coupler

to suspend loads from tube scaffold constructions



Code	Dimensions [cm]	Weight [kg]
<b>5FKUP08500*</b> 22 A/F		0,9

## Centre Part



Code	Dimensions [cm]	Weight [kg]
<b>5FKUP90010*</b> Ø 48,3, Hole Ø 17,5 non-galvanized		0,2
<b>5FKUP90014*</b> Ø 48,3, high type, non-galvanized		0,4
<b>5FKUP90015*</b> Ø 42,4, non-galvanized		0,2
<b>5FKUP90016</b> Ø 48,3, Hole Ø 17,5, galvanized		0,2
<b>5FKUP90019*</b> Ø 48,3, high type, galvanized		0,4

## Gate f. Coupler



Code	Dimensions [cm]	Weight [kg]
<b>5FKUP90020</b> Ø 48,3, galvanized		0,2
<b>5FKUP90021*</b> Ø 48,3, non-galvanized		0,2
<b>5FKUP90022</b> Ø 42,4, galvanized		0,2
<b>5FKUP90023*</b> Ø 38, galvanized		0,2

## Rivet



Code	Dimensions [cm]	Weight [kg]
<b>3ZNIE07940</b>		

## T-Bolt



Code	Dimensions [cm]	Weight [kg]
<b>5FHAS01402</b> M14x63		
<b>5FHAS01404</b> M14x75		
<b>5FHAS01406*</b> M14x97		

## Shoulder Nut



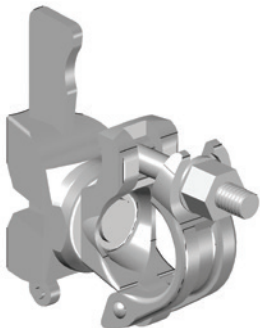
Code	Dimensions [cm]	Weight [kg]
<b>3ZBUM00100</b> M14, 19 A/F, galvanized		
<b>3ZBUM00200</b> M14, 22 A/F, galvanized		
<b>3ZBUM00300</b> M14, 23 A/F, galvanized		

## System Coupler

Steel, drop-forged with T-bolt and shoulder nut.

### Wedge Connection Coupler, fixed

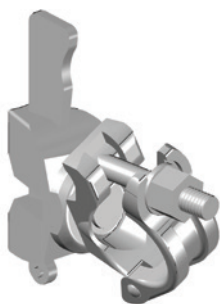
used to connect scaffold tubes to the modular system with a right angle



Code	Dimensions [cm]	Weight [kg]
<b>5FMPP19002*</b> 19 A/F		1,1
<b>5FMPP19000</b> 22 A/F		1,1
<b>5FMPP19007</b> parallel, 22 A/F		1,1

### Wedge Connection Coupler, turnable

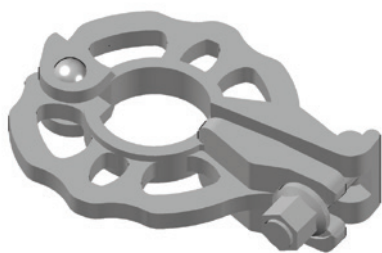
used to connect scaffold tubes to the modular system w/o limiting the angle



Code	Dimensions [cm]	Weight [kg]
<b>5FMPP19003</b> 19 A/F		1,2
<b>5FMPP19001</b> 22 A/F		1,2

### Disc Coupler

for the altitude-independent access of ledgers or braces

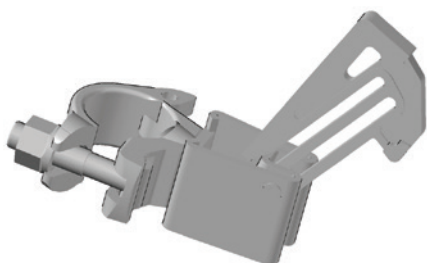


Code	Dimensions [cm]	Weight [kg]
<b>5FMPP28000</b> Ø 48, 19 A/F		1,1
<b>5FMPP28001</b> Ø 48, 22 A/F		1,1

### Guard Rail Coupler

Steel, drop-forged with T-bolt, shoulder nut and wedge pocket.

### Guard Rail Coupler quadro

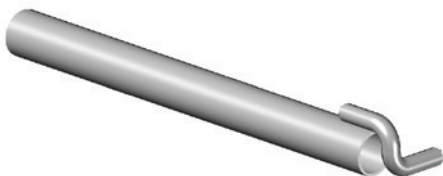


Code	Dimensions [cm]	Weight [kg]
<b>5F00202312</b> 19 A/F		1,1

## Scaffold Tie

Scaffolds must be tied to a solid structure in such a way as to be able to withstand forces in both directions perpendicular and parallel to the surface of the structure (tension and compression). The anchorage of the scaffold should be in accordance with the methods described in the manufacturers guides for the erection and use of the scaffold as well as any local or national requirements issued by Health and Safety Executives. Requirements per tying-in point are: One clearance tie with double coupler or one scaffold tie with two double couplers.

### Scaffold Tie



Code	Dimensions [cm]	Weight [kg]	PQ
5FSNN24009	30 L	1,3	100
5FSNN24010	50 L	1,9	100
5FSNN24005	80 L	2,9	100
5FSNN24000	110 L	3,9	100
5FSNN24001	130 L	4,5	100
5FSNN24002	150 L	5,2	100
5FSNN24003*	175 L	6,3	100
5FSNN24013*	190 L	6,5	100

## Eyebolt

12 mm Ø, steel, wood screw thread, galvanised, welded eye.

### Eyebolt



Code	Dimensions [mm]	Weight [kg]	PQ
5FDIV00106	95 L	0,1	100
5FDIV00107	120 L	0,2	100
5FDIV00108	160 L	0,2	100
5FDIV00109	190 L	0,3	100
5FDIV00110	230 L	0,3	100
5FDIV00111	350 L	0,4	100

## Expansion Anchor

Plastic, for eye bolts with wood screw thread. 12 mm fits 14 mm Ø drilled hole.

### Expansion Anchor



Code	Dimensions [mm]	Weight [kg]	PQ
5FDIV00105	70 L		100
5FDIV00149	100 L		100
5FDIV00150	130 L		100



## Plastic Cap

To cover 14 mm Ø drilled holes.

### Plastic Cap



Code	Dimensions [cm]	Weight [kg]	PQ
<b>5FDIV00104</b> for drilled holes Ø 14 mm			1.000

## Lifts, Winches

### Manual Operated Winch

Proper for the economic manual operated transportation of scaffolding material up to a maximum weight of 50 kg. Consist of lift bracket, pulley with hook and winch rope. Because of the additional loads caused by hoist handling a greater number of anchorage points might be necessary and have to be checked.

### Lift Bracket



Code	Dimensions [cm]	Weight [kg]
<b>5FSNN52001</b> w/o pulley 22 A/F	50 H	3,5

### Pulley

Ø 200 mm, w. hook



Code	Dimensions [cm]	Weight [kg]
<b>3ZLKR00001</b> for lift bracket		2,0

## Winch Rope



Code	Dimensions [cm]	Weight [kg]
<b>5F00209150*</b> 20 m		7,0

## Electronic Operated Winches

For the safe vertical transport of scaffold parts and building material up to a weight of 150 kg different types of electronic driven winches with 230 V/ 50 Hz are available. The winch will be supplied completely with swivel arm, slack rope switch, hook and 10 m steering cable to be anchored to the lower part of the scaffold. A steering cable of 30 m is alternatively available. Two kinds of lifting speeds, an overload protection and a slack rope switch are essential advantages that ensure the safeness of the winches.

### plettac-Mini 60 S

capacity power 60 kg, lifting speeds 23 m/min and 69 m/min



Code	Dimensions [cm]	Weight [kg]
<b>5SLIF001BK</b> with traction rope 51 m		56,5
<b>5SLIF002BK</b> with traction rope 81 m		67,0

### plettac-Maxi 120 S

capacity power 120 kg, lifting speeds 20 m/min and 60 m/min



Code	Dimensions [cm]	Weight [kg]
<b>5SLIF003BK</b> with traction rope 51 m		77,5
<b>5SLIF004BK</b> with traction rope 81 m		85,0

## plettac-Maxi 150 S

capacity power 150 kg, lifting speeds 15 m/min and 45 m/min



Code	Dimensions [cm]	Weight [kg]
<b>5SLIF005BK</b> with traction rope 51 m		77,5
<b>5SLIF006BK</b> with traction rope 81 m		77,5

## Accessories

### Spindle w. Coupler

Enables scaffold extensions to be levelled out, e.g. on top of a lattice girder.

#### Spindle w. Coupler



Code	Dimensions [cm]	Weight [kg]
<b>5FSOG16501</b> 19 A/F	50 H	2,9
<b>5FSOG16500</b> 22 A/F	50 H	2,9

### Head Jack

Head Jacks may take timber or steel beams to build the top end of supporting scaffolds, opening of fork head 17 cm.

#### Head Jack



Code	Dimensions [cm]	Weight [kg]
<b>5FSOG17000*</b> for square-shaped timber 160 mm	50 L	6,7

## Castor

To insert into scaffolding tubes. 200 mm Ø wheel, spindle travel 45 cm, load capacity 11,9 kN. The outer ring allows quick height adjustment of the mobile scaffold. The wing nuts allow the castors to be securely attached to holes in the frame or modular component. It contains an additional wing bolt to secure the complete castor to standards or frames. Independent scaffolds equipped with castors have to be designed in compliance with local regulations. Brakes enable locking of independent scaffold.

### Castor 11.9 kN

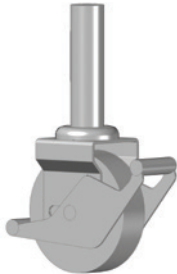
with spindle, adjustable height 45 cm, castor Ø 200 mm with brake, load capacity 11,9 kN centre point load



Code	Dimensions [cm]	Weight [kg]	PQ
5FSOG84000		8,4	40

### Castor

w/o height adjustment, load capacity 3,0 kN, wheel Ø 150 mm



Code	Dimensions [cm]	Weight [kg]
3ZLKR15106		2,5

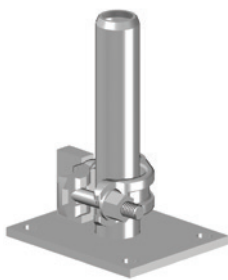
### Flanged Roller 1500

wheel- Ø 200 mm with bearing race, allows an easy operation on tubes or tracks, loading capacity 15 kN



Code	Dimensions [cm]	Weight [kg]
3ZLKR00021*		6,5

### Plate for Flanged Roller



Code	Dimensions [cm]	Weight [kg]
5FSOG13000*		2,5

### Bolt M12 x 35 mm with Nut



Code	Dimensions [cm]	Weight [kg]
5SSOG025ET		0,1

### Pig Tail Pin

9 mm Ø, steel, galvanised. Protection against lift-off.

### Pig Tail Pin

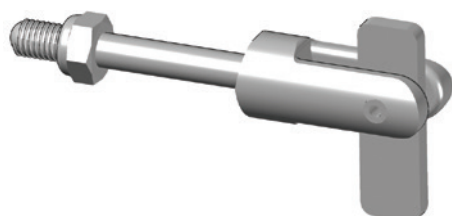


Code	Dimensions [cm]	Weight [kg]
5FBIE00805		0,1

### Gravity Pin SL

For later assembly.

### Gravity Pin SL w. Nut M8



Code	Dimensions [cm]	Weight [kg]
5FSNN30000		0,2



\* not available from stock

## Scaffold Canvas

To cover scaffolds for environmental protection against dust and dirt as well as weather protection canvas and nets are used. A variety of items are available in different types and dimensions. The scaffold has to be covered at the ends up to the building. It has to be anchored in accordance with the local health and safety regulations and the guidelines for erection and use.

### Scaffold Canvas 2,60

edge with eyelets, transparent white, approx. 160 g/m<sup>2</sup>, tensile strength approx. 650 N/5 cm



Code	Dimensions [cm]	Weight [kg]
5FPLA01700	260 B x 1.000 L	6,0
5FPLA01701	260 B x 2.000 L	12,0

### Scaffold Canvas 3,10

edge with eyelets, transparent white, approx. 160 g/m<sup>2</sup>, tensile strength approx. 650 N/5 cm



Code	Dimensions [cm]	Weight [kg]
5FPLA01702	310 B x 1.000 L	7,0
5FPLA01703	310 B x 2.000 L	14,0

## Nets

To cover scaffolds for environmental protection against dust and dirt as well as weather protection canvas and nets are used. A variety of items are available in different types and dimensions. The scaffold has to be covered at the ends up to the building. It has to be anchored in accordance with the local health and safety regulations and the guidelines for erection and use.

### Scaffold Net 2,50

for scaffold bays 250 cm, edge with eyelets, approx. 70 g/m<sup>2</sup>, wind passage ability approx. 70 %



Code	Dimensions [cm]	Weight [kg]
5FPLA02006	250 B x 1.000 L	1,9
5FPLA02007	250 B x 2.000 L	3,6

### Scaffold Net 3,00

for scaffold bays 300 cm, edge with eyelets, approx. 70 g/m<sup>2</sup>, wind passage ability approx. 70 %



Code	Dimensions [cm]	Weight [kg]
<b>5FPLA02004</b>	300 B x 1.000 L	2,2
<b>5FPLA02005</b>	300 B x 2.000 L	4,3

### One Way Plastic Tie

per 100 pieces 0,50 kg, tensile strength approx. 22,00 kg



Code	Dimensions [cm]	Weight [kg]	PQ
<b>5FPLA02106</b>			100

### Scaffolding Cords



Code	Dimensions [cm]	Weight [kg]
<b>5FPLA04000</b> 2,5 m		0,2
<b>5FPLA04001</b> 1,5 m		0,1

### Ratchet Spanner

Solid design with aluminium handle. Steel head with reverse lever for left-hand or right-hand motion. In different designs available.

### Ratchet Spanner



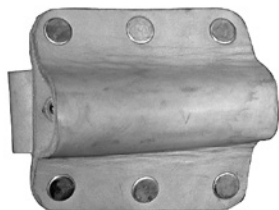
Code	Dimensions [cm]	Weight [kg]
<b>5FSLÜ00200</b> for 19 A/F	30 L	0,8
<b>5FSLÜ00202</b> for 22 A/F	30 L	0,8
<b>5FSLÜ00204*</b> for 24 A/F	30 L	0,8
<b>5FSLÜ00201</b> for 19 A/F and 22 A/F	30 L	1,0
<b>5FSLÜ00203*</b> for 22 A/F and 24 A/F	30 L	1,0

### Leather Belt f. Ratchet



Code	Dimensions [cm]	Weight [kg]
5FSLÜ00313	120 L	1,2

### Belt Adapter f. Ratchet



Code	Dimensions [cm]	Weight [kg]
5FSLÜ00312		

## Scaffold Tubes

Scaffold tubes can be supplied in a choice of either steel or aluminium. Ø 48,3 mm.

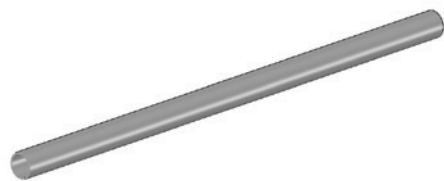
### Steel Scaffold Tube wall thickness 3,2 mm



Code	Dimensions [cm]	Weight [kg]	PQ
5FRDR00013	50 L	1,9	61
5FRDR00014	100 L	3,8	61
5FRDR00015	150 L	5,7	61
5FRDR00016	200 L	7,5	61
5FRDR00017	250 L	9,4	61
5FRDR00018	300 L	11,3	61
5FRDR00019	350 L	13,2	61
5FRDR00020	400 L	15,1	61
5FRDR00021	450 L	17,0	61
5FRDR00022	500 L	18,9	61
5FRDR00023	550 L	20,7	61
5FRDR00024	600 L	22,6	61



### Steel Scaffold Tube wall thickness 4,05 mm



Code	Dimensions [cm]	Weight [kg]	PQ
5FRDR00001*	50 L	2,3	61
5FRDR00002*	100 L	4,6	61
5FRDR00003*	150 L	7,0	61
5FRDR00004*	200 L	9,3	61
5FRDR00005*	250 L	11,6	61
5FRDR00006*	300 L	13,9	61
5FRDR00007*	350 L	16,2	61
5FRDR00008*	400 L	18,5	61
5FRDR00009*	450 L	20,8	61
5FRDR00010*	500 L	23,2	61
5FRDR00012*	600 L	27,8	61

### Alu Scaffold Tube wall thickness 4,0 mm



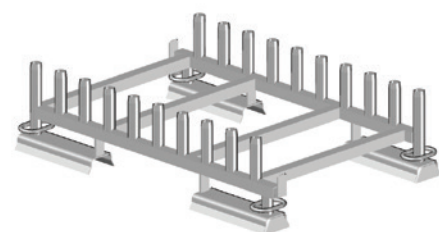
Code	Dimensions [cm]	Weight [kg]	PQ
5FRDR00028	100 L	1,5	61
5FRDR00029	150 L	2,3	61
5FRDR00030	200 L	3,0	61
5FRDR00031	250 L	3,8	61
5FRDR00032	300 L	4,5	61
5FRDR00033	350 L	5,3	61
5FRDR00034	400 L	6,0	61
5FRDR00036	500 L	7,5	61
5FRDR00027	600 L	9,0	61

### Stacking Pallets

A selection of different types of pallets is available for space saving storage at site or in the depot. Designed with attention to the dimensions of the most important system components usage of available space is guaranteed. Also suitable for transport, erection and inventory purposes. All pallets have been designed for fork-lift transport.

### Pallet for Vertical Frames

for 20 vertical frames standing upright



Code	Dimensions [cm]	Weight [kg]
<b>5FSL718500</b> for Vertical Frame 70	74 B x 119 L	40,7
<b>5FSL118500</b> for Vertical Frame 100	110 B x 119 L	47,8

### Pallet for Timber Decks SL

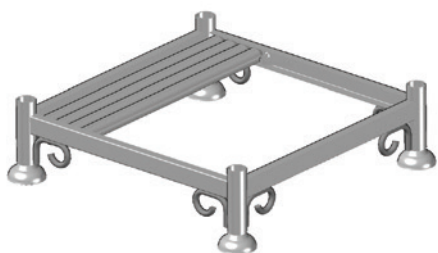
for storage of 44 timber decks SL



Code	Dimensions [cm]	Weight [kg]
<b>5FSLN14000</b>	78 B x 125 L	50,8
consists of both mapped sideparts		

### Pallet for Tubes 85x85

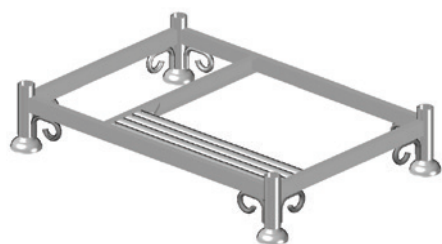
with 4 removable posts, load capacity 1.100 kg



Code	Dimensions [cm]	Weight [kg]
<b>5FSOG11501</b>	27 H x 85 B x 85 L	31,6

### Pallet for Tubes 125x85

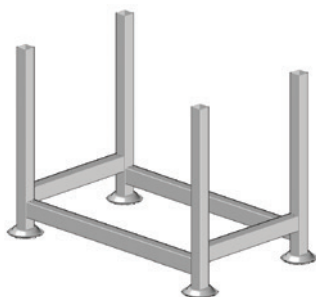
with 4 removable posts, load capacity 1.600 kg



Code	Dimensions [cm]	Weight [kg]
<b>5FSOG11500</b>	27 H x 85 B x 125 L	38,6

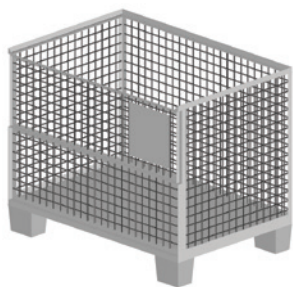
### Pallet for Tubes 110x60

with welded on rectangular posts, load capacity 6.500 kg



Code	Dimensions [cm]	Weight [kg]
<b>5FSOG69500</b>	93 H x 60 B x 110 L	42,1

## Euro Crate



Code	Dimensions [cm]	Weight [kg]
<b>5FDIV00120</b>	100 H x 80 B x 120 L	85,0

## Safety at work

### Advanced Guard Rail

Suitable for every common facade-and modular scaffolding systems (Ø48 mm); can be assembled from the top floor as well as from the lower floor.

### Advanced Guard Rail Post

Aluminium



Code	Dimensions [cm]	Weight [kg]
<b>5F00206600</b>		5,8

### Telescopic Guard Rail

Aluminium



Code	Dimensions [cm]	Weight [kg]
<b>5F00206800</b>		2,5
for advanced guard rail 207. Field length 1,50m - 2,07m		
<b>5F00206700</b>		3,0
for advanced guard rail 307. Field length 2,00m - 3,07m		

## PSA-Premium-Set

„(Producer Miller) according to DIN EN 361, available in two sizes; Set existing of:“

### Personal Protective Equipment

safety harness “R” Manyard Edge short absorber, hardware bag



Code	Dimensions [cm]	Weight [kg]
<b>5SDIV70502</b> Size S/M		5,5
<b>5SDIV70503</b> Size L/XL		5,5

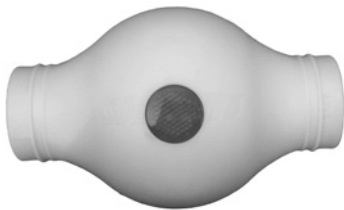
### Protection Cap for Disc

with two connection heads contour/futuro



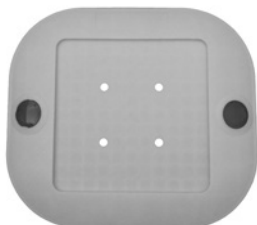
Code	Dimensions [cm]	Weight [kg]
<b>5FDIV30100*</b>		0,1

### Protection Cap for Coupler



Code	Dimensions [cm]	Weight [kg]
<b>5FDIV30200*</b>		0,1

### Protection Cap for Base Plate



Code	Dimensions [cm]	Weight [kg]
<b>5FDIV30300*</b>		0,2

#### Protection Cap for disc contur/futuro



Code	Dimensions [cm]	Weight [kg]
5FDIV30400*		0,1

#### Scaffolding Safety Helmet



Code	Dimensions [cm]	Weight [kg]
5FDIV70900		0,4
Colour red		







ALTRAD plettac assco GmbH · Postfach 52 42 · D-58829 Plettenberg  
Tel. +49 2391 815-01 · Fax +49 2391 815-343 · [info@plettac-assco.de](mailto:info@plettac-assco.de)  
[www.plettac-assco.de](http://www.plettac-assco.de)